



JEAN MONNET NETWORK FRONTM

*The Northern Ireland-Ireland border
region: Policies and practices*

Research Seminar

Canada Room, Queen's University, Belfast

Monday 14th March 2022



PROGRAMME

09:30 Coffee

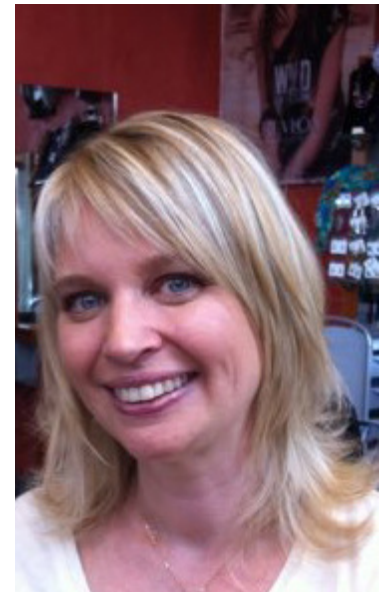
10:00 Welcome to Queen's University Belfast

10:05 Overview of FRONTM

Prof Birte Wassenberg

University of Strasbourg

Birte Wassenberg is Professor in Contemporary History at the Institute for Political Studies (IEP) of the University of Strasbourg and member of the Research Institute for History Raymond Poidevin at the UMR Dynamiques européennes. She holds a Jean Monnet Chair and is director of the Master in International Relations. From 1993 to 2006 she was responsible for cross-border cooperation at the Région Alsace.



10:15 Plenary address: *Frontiers in Motion: The peculiar case of the Protocol on Ireland/Northern Ireland*

Prof Katy Hayward

Queen's University Belfast

Katy Hayward is Professor of Political Sociology at Queen's University Belfast and a Senior Fellow of the UK in a Changing Europe thinktank. She is an internationally recognised expert on Brexit and Northern Ireland/Ireland, particularly with respect to the Irish border. She was appointed to the technical expert panel of the UK government's Alternative Arrangements Advisory Group on Brexit (2019) and has given written and oral evidence before many parliamentary committees in the UK, Ireland and EU.



10:45 Discussion

11:15 Coffee break

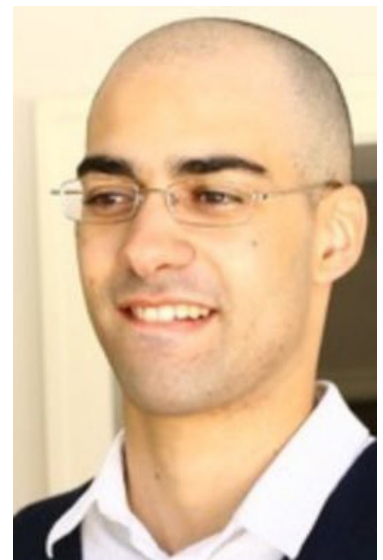
11:30 Session on policies of (cross) border management on the island of Ireland

Northern Ireland's Hybrid Trade Regime and the Supremacy of the Protocol

Dr Billy Melo Araújo

Queen's University Belfast

Billy Melo Araujo is Senior Lecturer of Law at Queen's His research interests focus in the areas of international trade law and EU external trade relations. More recently, his research has focused on the trade-related dimension of Brexit. He has, in particular, written on the interplay between devolution and UK trade agreements as well as the implications of the Ireland-Northern Ireland Protocol.



Healthy Co-dependencies: Coordination in healthcare policy across island of Ireland

Prof Deidre Heenan

Ulster University

Deirdre Heenan was formerly Provost and Dean of Academic Development at the Magee Campus. A distinguished researcher, author and broadcaster, she is a member of the Institute for Research in Social Sciences and has published widely on healthcare, education policy, social care and devolution. She is a co-founder and former co-director of the Northern Ireland Life and Times Survey.



Wynebu Brexit ar Fôr Iwerddon | Confronting Brexit on the Irish Sea

Dr Jonathan Evershed

University College Dublin

Jonathan Evershed is the Newman Fellow in Constitutional Futures at the Institute for British-Irish Studies, University College Dublin. Formerly Postdoctoral Researcher on the EU-funded 'Ports, Past and Present' project at University College Cork and ESRC-funded Postdoctoral Fellow on the project, 'Between Two Unions: The Constitutional Future of the Islands after Brexit.



12:30 Discussion

13:00 Lunch

14:15 Plenary address: *The North South Ministerial Council and Mobility on the Island*

Mark Hanniffy

Joint Secretary, North South Ministerial Council

Mark Hanniffy leads a team of Irish Civil Service officials based at the NSMC Joint Secretariat in Armagh, which works closely with counterparts from the Northern Ireland Executive to support the work of the Council across twelve agreed areas of North/South cooperation. The role also involves support for broader North/South economic cooperation and the development of the All-Island Economy.



Tim Losty

Joint Secretary, NorthSouth Ministerial Council

Tim Losty is the Joint Secretary of the North South Ministerial Council and also Director for International Relations for the Northern Ireland Executive. Tim has also worked on conflict resolution programmes and participated in a number of international programmes with the EU, British and Irish governments.



14:45 Discussion

15:15 Coffee break

15:30 Session on practices of cross-border mobility

Brexit and the Border: Mobility in the Central Border Region

Dr Milena Komarova

Queen's University Belfast

Milena Komarova is Research Fellow at the School of Social Sciences, Education and Social Work at Queen's. Her work has focused on the interaction between the changing built environment and regeneration in Belfast and inter-communal divisions, and on practices of conflict management among civil society groups in the city.



***Ethnicity, territory and transformation.
Borders and boundaries in Ireland, North
and South, after Brexit.***

Prof Jennifer Todd

University College Dublin

Jennifer Todd is Emeritus (Full) Professor, School of Politics and International Relations, UCD and Research Director, Institute for British-Irish Studies, UCD. The focus of her work, from early analyses of aesthetics and politics to current work on conflict and settlement, state change and identity shift, has been on the interrelation of socio-economic and political processes and processes of cultural change.



***Practices of Cross-Border Mobility: SCoTENS
as a learning, cross-border, organization***

Prof Kathy Hall

University College Cork

Kathy Hall is Professor of Education in the School of Education. Prior to her work in higher education, she had the roles of class teacher, deputy principal, principal in Ireland. Her research seeks to develop sociocultural understanding of learning and pedagogy and she has published widely in these areas. Her interests include learning and teaching across the lifespan, curriculum and assessment, inclusion and equality in learning and education, and contemporary Irish childhoods



16:30 Discussion

17:00 Close

19:30 Dinner at Molly's Yard, Belfast

ABOUT FRONTM

FRONTM is the first Jean Monnet network which has been obtained by France within the framework of the EU's Erasmus+ activity program. It brings together 3 Centres of excellence and 7 Jean Monnet Chairs both from Europe and Canada and its aim is to develop international and multidisciplinary research linking European Studies and Border Studies, i.e. two so far not much interconnected fields of study. Our network seeks to facilitate a new reading of the role of the borders in European integration by considering that there is not only one model of perception and management of borders in and around the European Union, but that these also depend on the specificity of each border region concerned.

During 4 years, our network carries out exchanges of knowledge and practice on five different models of management of EU borders by gathering young researchers, PhD students and citizen associations. A comparative analysis will also be conducted between the EU and Canada in order to evaluate if European border models could be transposed in other regions throughout the world. The network plans to organize a doctoral seminar, several research seminars and a number of focus-groups which will allow to give an overview also of the perception of borders by representatives of the civil society situated in cross-border territories. The objective is to develop a typology of models on perception and management of borders in the EU corresponding to political needs and to the expectations of European people.



With the support of the
Erasmus+ Programme
of the European Union



CONTACT

Anthony Soares

Director

Centre for Cross Border Studies

e: a.soares@qub.ac.uk

t: 02837511554

Nick Hanrahan

Communications & Events Officer

Centre for Cross Border Studies

e: n.hanrahan@qub.ac.uk



The Centre for
Cross Border Studies



UCC

Coláiste na hOllscoile Corcaigh, Éire
University College Cork, Ireland